

WELCOME

Adax is a company which is proud to be a leading manufacturer of electrical heating appliances. We have developed this magazine to inspire you and for you to choose the right heater for the interior of your home

We have been supplying high quality electrical appliances for your home with a contemporary design since 1948. We emphasize on good design, eco-friendly materials, and the user-friendly technology that contributes to energy efficiency.

Due to our continuous development and innovation, we are today the market leader in Norway as well as in many parts of the Nordic countries. Moreover, we have large export arrangements to a number of countries in Europe and worldwide.

A panel heater is an important source of heat during cold winter days. This magazine has been developed in order to inspire you to choose the heater that best suits your home interior.

Our dedicated employees work on a

daily basis in order to offer the market new and innovative products, so that you, as a consumer are provided with heaters of the highest quality and design to meet your needs. All product are produced under guidance of EU regulation 2015/1188. Adax is committed to ensuring that all products are compliant with ErP Directive and Regulations.

We sincerely hope that you will find the inspiration you need in this magazine. Technical information and guidance on how to choose the right product for you can be found in the last pages of this magazine.

Warmest regards,

ADAX

CONTENT

DESIGN HEATERS

QUALITY & DESIGN	5
NEO BASIC	6
NEO WIFI	10
CLEA WIFI	14

OUR PRODUCT SELECTION

FAN HEATER, DRYING PRODUCTS AND ACCESSORIES	20
DESIGNED HEATERS	21

TECHNICAL INFORMATION

ADAX NEO BASIC	23
ADAX NEO WIFI	24
ADAX CLEA WIFI	25
ADAX FAN HEATER	25
ADAX SHOE DRYER	25
ADAX DRYING RACK	26
ADAX TOWEL DRYER	26
ADAX FLOOR STANDS	26
HOW TO CHOOSE THE RIGHT HEATER?	26
CONTACT INFO	28

DESIGN HEATERS

OUR PANEL HEATERS ARE NOT LIKE ANY OTHER. WE FOCUS ON DESIGN, DEVELOPING PRODUCTS THAT LOOK GOOD AND ARE USER-FRIENDLY. WE HOPE THAT YOU WOULD CHOOSE ADAX PANEL HEATERS AS PART OF YOUR HOME INTERIOR.



QUALITY & DESIGN.

We have been supplying high quality electrical appliances for your home with a contemporary design since 1948. We emphasize on good design, eco-friendly materials, and the user-friendly technology that contributes to energy efficiency.



QUALITY

All our panel heaters are built with care by our highly motivated workers and skilled tradesmen. Our work and production environment is so unique that many of our staff have been working with the company the whole of their professional life.

Thus resulting in products based on a high level of competence, experience and quality. As the market leader and manufacturer for many years we can provide a 5 year warranty on our own manufactured products.



DESIGN

We thrive to be, at all times, the best suppliers of heaters. The experience gained over the years has helped us to be inspired, every day in everything we do.

Our products look good and are user-friendly. They are designed to suit your taste and provide you with the opportunity to meet your individual requirements through colour selection. We seek to develop heaters that not only provide you with the heat you expect, but that will also fit within the interior design of your home.



DETAILS

Our focus has always been on detail. Details you shouldn't have to think about in a hectic everyday life.

We don't want to provide you just with the warmth you have need for, but to give you a panel heater that is known to be good and work well at home and for life. It is this focus that has helped us to become the market leader in the Nordic countries and to sell in Europe's demanding markets.

NEO BASIC

First impressions are important. Therefore, we spend extra time focusing on the details. The Adax Neo Basic panel heater is not just a heater, but also a part of the interior of your home and an expression of who you are.



Neo Basic, our designer panel heater, saw the light first time in 2007, when it came, it revolutionised the market for electric panel heaters. Neo Basic combined our known quality, with a Norwegian, modern and stylish design. Suddenly, panel heaters weren't boring anymore, but an important part of the interior design of your home.



The Neo Basic was so unique that we in 2008 received a mark «for good design» by the Norwegian Design Council. Neo Basic was designed in cooperation with Hareide Design. They have a longstanding experience in turning various types of products into unique designs.

Neo Basic is currently our most popular heater sold in all Nordic countries and most countries in Europe.

As a compliment to the new and revolutionary design, we have introduced a new range of colours on all Neo Basic panel heaters. You can choose between four different colours on the Neo Basic range; white, black, silver, and red.

Neo Basic comes as standard with a digital thermostat that has an integrated day and night setting function, adaptive start, open window/door detection and other functions.

NEO BASIC IS DESIGNED FOR YOUR HEATING NEEDS. IT IS DESIGNED FOR YOU AND YOUR HOME INTERIOR. NEO HAS A NORWEGIAN DESIGN THAT MAKES YOU WARM.



5 years warranty



Digital thermostat



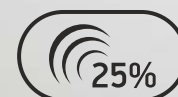
Open window/
door detection



Calibration



Child lock
function



Savings
up to 25%



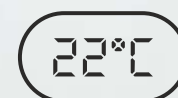
Protected against
overheating



Programmable
24/7



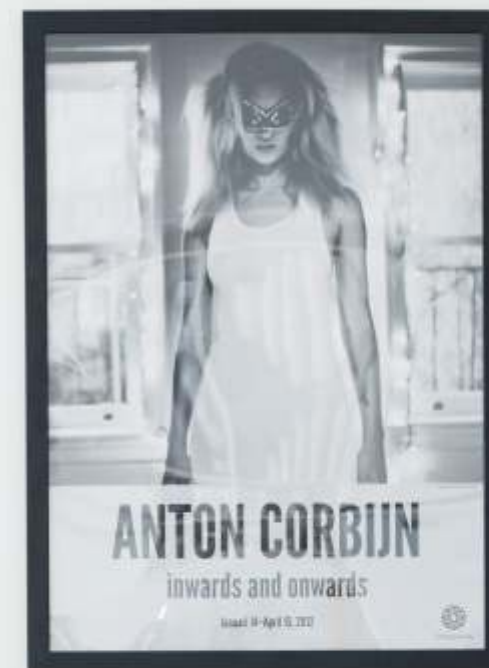
Adaptive start



Precise temperature
control ($\pm 0,3^{\circ}\text{C}$)



Antifrost



NEO WIFI

New generation heaters Adax Neo with WiFi thermostat - contemporary, elegant, slim line form eminently suits modern interiors and adapted to different premises: residential, commercial, and etc.



Wireless thermostat WT advantages:

- operated from a smart phone or tablet through the internet network
- controlled by the program (application), adapted to iOS and Android phone platforms from any place of the world
- without connection to mobile device, thermostat performs as an electronic thermostat and maintains manually set constant temperature
- current temperature readings and the desired temperature settings displayed on smartphone or tablet screen
- the desirable weekly or daily temperature pre-setting and editing
- fully adjustable comfort and economic (day and night) temperature settings
- easily programmed by using mobile application
- displaying preset temperature of the thermostat screen display
- energy efficient (energy savings of up to 25%)
- precise, silent and sensitive

Heater's protection class IP24 (splash proof), so they can be installed both in ordinary household or commercial premises as well as in humid premises such as bathroom and laundry.

Built-in wireless thermostat WT allows to heat the premises, when it is needed, and reduce the room temperature at night or day, when you are sleeping or not at home. If your plans will change, you can easily change the current settings with your smart phone or tablet by using the mobile app (application), regardless your location.

The thermostat maintains precise temperature, which is an essential condition for comfort and energy savings. Illuminated LCD display on heater shows what the temperature is maintained in the room and on smart phone or tablet screen is displayed current and preset temperatures.

The thermostat maintains precise temperature, which is an essential condition for comfort and energy savings. Illuminated LCD display on heater shows what the temperature is maintained in the room and on smart phone or tablet screen is displayed current and preset temperatures.

ADAX NEO WIFI WAS DESIGNED BY ONE OF THE MOST FAMOUS SCANDINAVIAN DESIGN COMPANY HAREIDE DESIGNMILL AND ACCOMPLISHED BY EXPERIENCED ADAX ENGINEERS. ADAX NEO WIFI FIT ALL INTERIORS AND ENSURES COMFORTABLE HEATING FOR WHICH THE ADAX IS FAMOUS FOR A LONG TIME.



5 years warranty



Double isolation



Splash proof, IP24 protection



Protected against overheating



WiFi thermostat



Programmable 24/7



Open window/door detection



Adaptive start



Calibration



Precise temperature control ($\pm 0,3^{\circ}\text{C}$)



Child lock function



Antifrost



Savings up to 25%

CLEA WIFI

Adax Clea with WiFi thermostat is our exclusive glass heater. Adax is proud to deliver high quality products, focusing on design. Clea WiFi is not an exception. With a hardened glass surface and with a finish as smooth as a mirror adding taste and elegance to your interior.

CLEA WIFI REFLECTS YOU AND YOUR INTERIOR WITH ITS EXCLUSIVE GLASS FRONT PANEL. CLEA WIFI IS NORWEGIAN DESIGN THAT MAKES YOU WARM.



Handsome. Stylish. Elegant. Clea WiFi is designed for you who wish to add extra style to your interior. Our focus on quality is reflected in the hardened glass surface in black or white, secured with four bolts and with a low surface temperature. Every little detail is carefully thought out.

Clea WiFi is delivered with a WiFi thermostat. Built-in wireless thermostat WT allows to heat the premises, when it is needed, and reduce the room temperature at night or day, when you are sleeping or not at home. If your plans will change, you can easily change the current settings with your smart phone or tablet by using the mobile app (application), regardless your location.

Wireless thermostat WT advantages:

- operated from a smart phone or tablet through the internet network
- controlled by the program (applications), adapted to iOS and Android phone platforms from any place of the world
- without connection to mobile device, thermostat performs as an electronic thermostat and maintains manually set constant temperature
- current temperature readings and the desired temperature settings displayed on smart phone or tablet screen
- the desirable weekly or daily temperature pre-setting and editing
- fully adjustable comfort and economic (day and night) temperature settings
- easily programmed by using mobile application
- displaying preset temperature of the thermostat screen display
- energy efficient (energy savings of up to 25%)
- precise, silent and sensitive



OUR EXCLUSIVE PANEL HEATER WITH GLASS FRONT CLEA NOW COMES WITH INTEGRATED WIFI THERMOSTAT. USE THE APP ON YOUR SMARTPHONE FOR FULL CONTROL OF ALL HEATER FUNCTIONS FROM ANYWHERE IN THE WORLD.



5 years warranty



Double isolation



Splash proof, IP24 protection



Protected against overheating



Hardened glass surface



WiFi thermostat



Open window/door detection



Programmable 24/7



Calibration



Adaptive start



Child lock function



Precise temperature control ($\pm 0,3^{\circ}\text{C}$)



Savings up to 25%



Antifrost

OUR PRODUCT SELECTION

IN ADDITION TO OUR PANEL HEATERS, WE ALSO PROVIDE A SELECTION OF HEATING APPLIANCES THAT WILL PROVIDE YOU WITH THE HEATING YOU EXPECT. EVERYTHING YOU NEED TO WARM YOU A BIT EXTRA DURING COLD WINTER DAYS.



FAN HEATER, DRYING PRODUCTS AND ACCESSORIES



FAN HEATER WV9 T

3-step power regulator.
2000 Watts including a fan.
5 year warranty.

See the technical information on page 25



SHOE DRYER ST 3 D

A shoe dryer with a digital timer for
required time of drying, 220 Watts.
2 year warranty.

See the technical information on page 25



DRYING RACK TKH

Generates fast and efficient drying for shoes and clothes.
It comes in two sizes and Watts: 80 Watts - 87 cm in length,
110 Watts and 117 cm in length.

See the technical information on page 26



TOWEL DRYER HKT

Fast and efficient drying of towels, clothes and etc.
It comes in 2 sizes and Watts: 45 and 65 W.

See the technical information on page 26

FLOOR STANDS FOR NEO, CLEA

The heater's floor stand makes it possible to position your heater
where you desire, in front of a low/large window, for example.
It includes 4 screws to be placed at the back of the heater.
The floor stand is available for both panel and low-level heater.
5 year warranty.

See the technical information on page 26



DESIGNED HEATERS

NEO BASIC PANEL HEATER

The Neo Basic panel heater is our Price-Awarded Designed
heater and one of our best sellers.
The Neo Basic is also available as a low-level panel heater,
specifically designed to fit in spaces, such as below a high window.
It comes with the programmable thermostat which includes
an automatic built-in day and night time temperature reduction.
It is available in white, black, silver, and red.
5 year warranty.

See the technical information on page 23



NEO WIFI PANEL HEATER

A brand new generation heaters of ADAX NEO with
WiFi thermostat. The ADAX WiFi application gives
you full control over the heater's functions directly
from your smartphone or tablet. Available in white.
5 years warranty.

See the technical information on page 24



CLEA WIFI PANEL HEATER

Exclusive Clea Wifi designed with a hardened glass surface.
It comes with the integrated wireless thermostat WT,
which allows by using the app on your smartphone full
control of all heater functions from anywhere in the world.
Available in white and black. 5 year warranty

See the technical information on page 25



TECHNICAL INFORMATION

ON THE NEXT PAGES YOU WILL FIND A COMPLETE OVERVIEW OF ALL OUR PRODUCTS INCLUDING WATTS, LENGTHS AND COLOURS TO HELP YOU FIND THE PRODUCTS MOST SUITABLE TO YOUR NEEDS.



ADAX NEO BASIC

Panel heater

The Neo Basic panel heater is available in a standard model with a digital electronic thermostat with an automatic built-in day and night time temperature reduction settings, adaptive start, open window/door detection and other functions. If you use temperature reduction function effectively you can reduce the energy consumption of heating up to 25 %. Plug and cable included. Height: 370 mm, depth: 90 mm. 230 volts. 5 year warranty.

PRODUCT	WATT	COLOR	LENGTH	ART.NO.
NP 20 KDT	2000W	White	1394 mm	650020
		Red	1394 mm	650120
		Black	1394 mm	650220
		Silver	1394 mm	650320
NP 14 KDT	1400W	White	1042 mm	650014
		Red	1042 mm	650114
		Black	1042 mm	650214
		Silver	1042 mm	650314
NP 12 KDT	1200W	White	934 mm	650012
		Red	934 mm	650112
		Black	934 mm	650212
		Silver	934 mm	650312
NP 10 KDT	1000W	White	762 mm	650010
		Red	762 mm	650110
		Black	762 mm	650210
		Silver	762 mm	650310
NP 08 KDT	800W	White	704 mm	650008
		Red	704 mm	650108
		Black	704 mm	650208
		Silver	704 mm	650308
NP06 KDT	600W	White	589 mm	650006
		Red	589 mm	650106
		Black	589 mm	650206
		Silver	589mm	650306
NP 04 KDT	400W	White	474 mm	650004
		Red	474 mm	650104
		Black	474 mm	650204
		Silver	474 mm	650304
<div>Length in mm</div> <div><div></div><div></div><div></div><div></div><div></div><div></div><div></div><div></div></div> <div>47458970476293410421394</div>				

Wall strip heater

This low profile heater is perfect below high windows. Plug and cable included. Height: 200 mm, depth: 90 mm. 230 volts. 5 year warranty.

PRODUCT	WATT	COLOR	LENGTH	ART.NO.		
NL 12 KDT	1200W	White	1450 mm	660012		
		Red	1450 mm	660112		
		Black	1450 mm	660212		
		Silver	1450 mm	660312		
NL 10 KDT	1000W	White	1280 mm	660010		
		Red	1280 mm	660110		
		Black	1280 mm	660210		
		Silver	1280 mm	660310		
NL 08 KDT	800W	White	1050 mm	660008		
		Red	1050 mm	660108		
		Black	1050 mm	660208		
		Silver	1050 mm	660308		
NL 06 KDT	600W	White	870 mm	660006		
		Red	870 mm	660106		
		Black	870 mm	660206		
		Silver	870 mm	660306		
Length in mm			870	1050	1280	1450

ADAX NEO WIFI

Panel heater

The NEO WiFi panel heater is available in a standard model with a WiFi thermostat which allows to program day and night reductions then you are way from home via application by using smartphone or tablet. If you use this function effectively you can reduce the energy consumption of heating up to 25%. Plug and cable included. Height: 330 mm, depth: 87 mm. 230 volts. 5 year warranty.

PRODUCT	WATT	COLOR	LENGTH	ART.NO.
NEO H 20 KWT	2000W	White	1403 mm	410048
NEO H 14 KWT	1400W	White	1094mm	410046
NEO H 12 KWT	1200W	White	984 mm	410045
NEO H 10 KWT	1000W	White	809 mm	410044
NEO H 08 KWT	800W	White	750 mm	410043
NEO H 06 KWT	600W	White	635 mm	410042
NEO H 04 KWT	400W	White	565mm	410041
NEO H 02 KWT	250W	White	520 mm	410040
<div><div></div><div>Length in mm52056563575080998410941403</div></div>				

Wall strip heater

This low profile heater is perfect below high windows. Plug and cable included. Height: 210 mm, depth: 87 mm. 230 volts. 5 year warranty.

PRODUCT	WATT	COLOR	LENGTH	ART.NO.
NEO L 14 KWT	1400W	White	1760 mm	420046
NEO L 12 KWT	1200W	White	1548 mm	420045
NEO L 10 KWT	1000W	White	1380 mm	420044
NEO L 08 KWT	800W	White	1186 mm	420043
NEO L 06 KWT	600W	White	1005 mm	420042
NEO L 04 KWT	400W	White	783 mm	420041
NEO L 02 KWT	250W	White	655 mm	420040
<div><div></div><div>Length in mm65578310051186138015481760</div></div>				

ADAX CLEA WIFI

Panel heater

Clea is our exclusive glass heater with a hardened glass surface and a finish as smooth as a mirror. Available in white or black. Comes standard with an wireless thermostat WT. Plug and cable included. Height: 340 mm, depth: 87 mm. 230 volts. 5 year warranty.

PRODUCT	WATT	COLOR	LENGTH	ART.NO.
CLEA H 12 KWT	1200W	White Black	1024 mm 1024mm	810045 810245
CLEA H 10 KWT				
CLEA H 08 KWT				
CLEA H 06 KWT				
CLEA H 04 KWT				
	600W	White Black	676 mm 676mm	810042 810242
	400W	White Black	606 mm 606 mm	810041 810241
<div><div></div><div>Length in mm6066767908501024</div></div>				

Wall strip heater

This low profile heater is perfect below high windows. Plug and cable included. Height: 222 mm, depth: 87 mm. 230 volts. 5 year warranty.

PRODUCT	WATT	COLOR	LENGTH	ART.NO.
CLEA L 10 KWT	1000W	White Black	1368 mm 1368 mm	820044 820244
CLEA L 08 KWT	800W	White Black	1144 mm 1144 mm	820043 820243
CLEA L 06 KWT	600W	White Black	964 mm 964 mm	820042 820142
<div><div></div><div>Length in mm96411441368</div></div>				

ADAX FAN HEATER

Fan heater from Adax heats a space efficiently and safe. Safeguarded against overheating. 5 year warranty.

PRODUCT	WATT	THERMOSTAT		ART.NO.
VV9 T	2000 W	Stepless thermostat	Silent fan	555010


ADAX SHOE DRYER

Efficient and reliable drying of shoes and boots. With a digital timer. 2 year warranty.

PRODUCT	WATT	THERMOSTAT	ART.NO.
ST3D	220 W	Digital display and automatic timer	238100



ADAX DRYING RACK

A simple and efficient way to dry your shoes or clothes. The drying rack can be swung up against the wall. 5 year warranty.

PRODUCT	WATT	SWITCH	LENGTH	ART.NO.
TKH 80	80 W	ON /OFF-switch	870 mm	230510
				
TKH 110	110 W	ON /OFF-switch	1170 mm	230515

ADAX TOWEL DRYER

ADAX towel dryers dries towels, clothes and etc. Both models are universal and suited to be installed with connection to either the right or left side or left as swing version. 5 years warranty.

PRODUCT	WATT	SWITCH	COLOR	MEASUREMENTS	WINGS NO.	ART.NO.
HKT 145WS	45 W	ON /OFF switch	White	550 / 420 mm	2	232512
						
HKT 163 WS	65 W	ON /OFF switch	White	550 / 620 mm	3	232522
						

ADAX FLOOR STANDS

The floor stands TFH/TFL for the NEO WiFi and CLEA WiFi. The floor stands P/L for the NEO BASIC, NEO WiFi and CLEA WiFi. TFH/P for the panel and TFL/L for the wall strip heaters.

PRODUCT	COLOR	ART.NO.
FLOOR STAND TFH	White	755500001
FLOOR STAND TFL	White	755500000
FLOOR STAND P	White	914010
FLOOR STAND L	White	914011

HOW TO CHOOSE THE RIGHT HEATER?

It is important to keep the correct power in proportion with the number of square meters of the room in order to maintain the right temperature in the room. It is recommended to place panel heaters under windows to prevent cool air drafts from the windows. Please use the table below to find out the correct power efficiency you should have in your room. If the room is large with many windows, it can be practical to use several heaters, so that the heat spreads faster and better.

HEATER POWER, Watts	HEATED AREA THEN NEED FOR HEAT BELOW 50 Watts/m²*	HEATED AREA THEN NEED FOR HEAT 50 -100 Watts/m²*	HEATED AREA THEN NEED FOR HEAT ABOVE 100 Watts/m²*
250	5 - 6 m²	2 - 4 m²	2 - 3 m²
400	6 - 10 m²	5 - 7 m²	3 - 5 m²
600	10 - 14 m²	8 - 10 m²	4 - 7 m²
800	14 - 20 m²	12 - 14 m²	6 - 9 m²
1000	18 - 26 m²	14 - 16 m²	8 - 12 m²
1200	24 - 30 m²	17 - 20 m²	10 - 14 m²
1400	28 - 35 m²	21 - 25 m²	12 - 17 m²
2000	32- 50 m²	26 - 34 m²	17 - 24 m²

*height to the ceiling is maximum 2,4 m.





ADAX

HEADQUARTERS
Myhresgate 1
NO-3060 Svelvik
Norway

PRODUCTION SITE:
Ramygala str. 190E
LT-36224 Panevezys
Lithuania

www.adax.no
www.adax.lt/en

shop online · tienda online en España

www.radiadoresshop.online
www.itacadesign.es